

MANUFACTURED BY BELCO MANUFACTURING COMPANY
Belton, Texas USA

DATE	4/8/13	SERIAL NO	37504		
CUSTOMER	VAN HORN CONSTRUCTION, INC.				
DESIGN PRESS.	0.0/0.0 PSIG	S.G.	1.17	DESIGN TEMP.	105 °F
CONTENT	12.5% SODIUM HYPOCHLORITE	EMPTY WT.	980 LB.		
NOM. CAPACITY	1,003 U.S. GALLONS	FULL WT.	11,580 LB.		
MAT'L C.B. IC. 2N.3M	HETRON 922	EPOXY VINYLESTER RESIN/BPO/DMA			
MAT'L STRUCTURE	HETRON 922 EPOXY VINYLESTER RESIN/BPO/DMA				
DIA.	4'-0"	SSW	11'-2"	ITEM #	SHCLR-T-31
P.O.#	13101.11210m				12095704



ASSEMBLY BY: LUZ CERNA

Q.C. BY: FAUSTO JIMENEZ

MANUFACTURED BY BELCO MANUFACTURING COMPANY
Belton, Texas USA

DATE	5-08-13	SERIAL NO.	37506
CUSTOMER	VAN HORN CONSTRUCTION, INC.		
DESIGN PRESS.	0.0/0.0 PSIG	S.G.	1.10
DESIGN TEMP.	195° C		
CONTENTS	15% HYDROCHLORIC ACID	EMPTY WT.	3,800 LB.
NOM. CAPACITY	6,064 U.S. GALLONS	FULL WT.	83,400 LB.
MAT'L C. B.	2C, 5M/HETRON 922 EPOXY VINYLESTER RESIN/MEKP		
MAT'L STRUCTURE	HETRON 922 EPOXY VINYLESTER RESIN/MEKP		
DIA.	12'-0"	SSW	7'-8"
ITEM #	HCL-T-21		
P.O.#	13101.11210m		12895705



ASSEMBLY BY: FRANCISCO ORTIZ

Q.C. BY: STEVEN RODRIGUEZ

1

HCL

6000 GALLONS

MANUFACTURED BY BELCO MANUFACTURING CO.
Belton, Texas, U.S.A.

DATE	5-02-83	SERIAL NO.	37547
CUSTOMER	VAN HORN CONSTRUCTION, INC.		
DESIGN PRESS.	0.0/0.0 PSIG	S.G.	1.34
DESIGN TEMP.	100° F		
CONTENTS	25% SODIUM CHLORITE	EMPTY WT.	4,500 LB.
NOM. CAPACITY	7,544 U.S. GALLONS	FULL WT.	107,600 LB.
MAT'L C. B.	4C IN 3M/BETRON 922 EPOXY VINYLESTER RESIN/EPIDMA		
MAT'L STRUCTURE	BETRON 922 EPOXY VINYLESTER RESIN/EPIDMA		
DNK.	12-05	SSW	8'-6"
ITEM #	SCHL-T-32		
P.O. #	1810111210ny		11025705

37547

BELCO

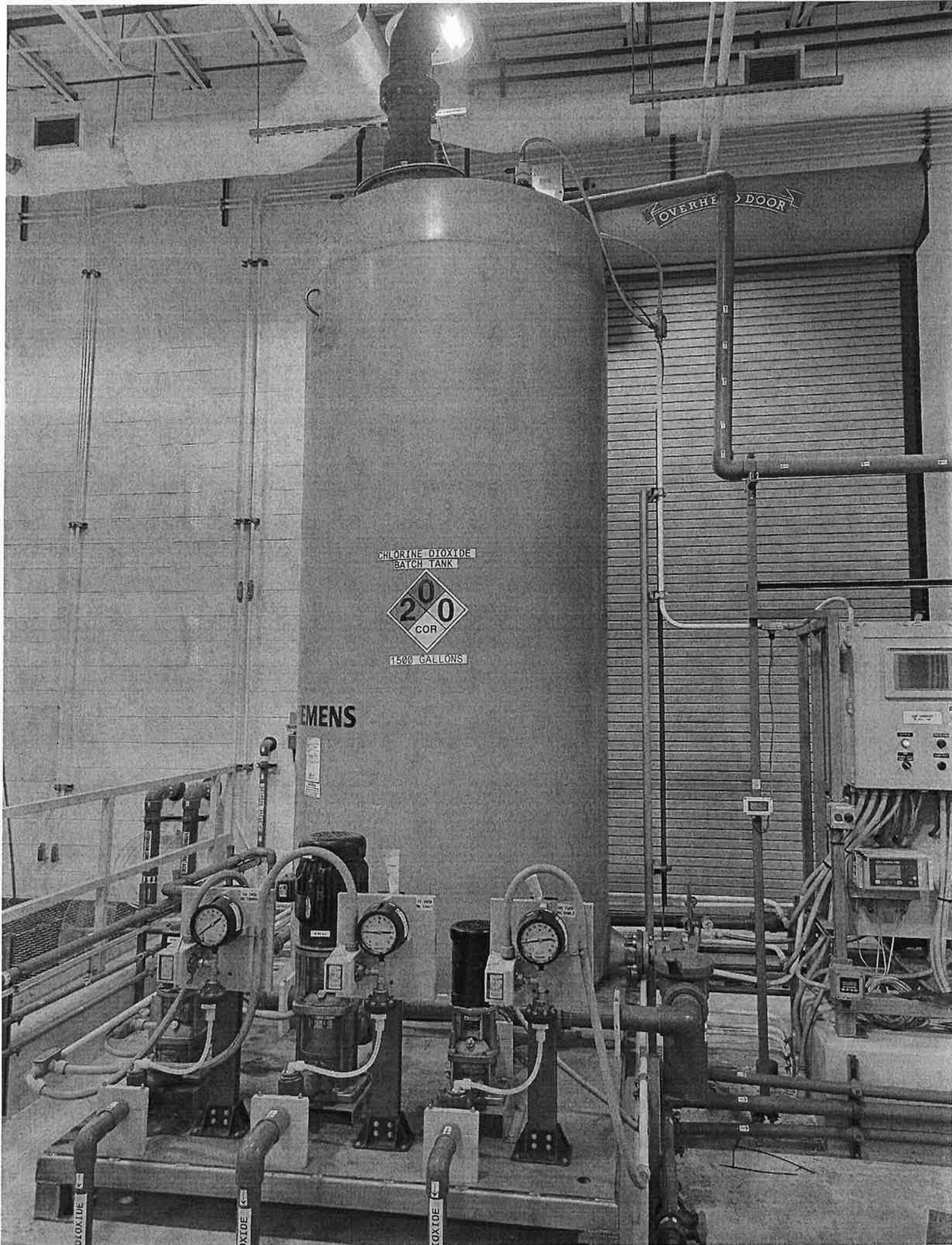
254-622-8500 Manufacturing Co. BELTON, TX

ASSEMBLED BY FRANCISCO ORTIZ	QC BY STEVEN RODRIGUEZ
------------------------------	------------------------

CHLORITE

TANK 2

7500 GALLONS



OVERHEAD DOOR

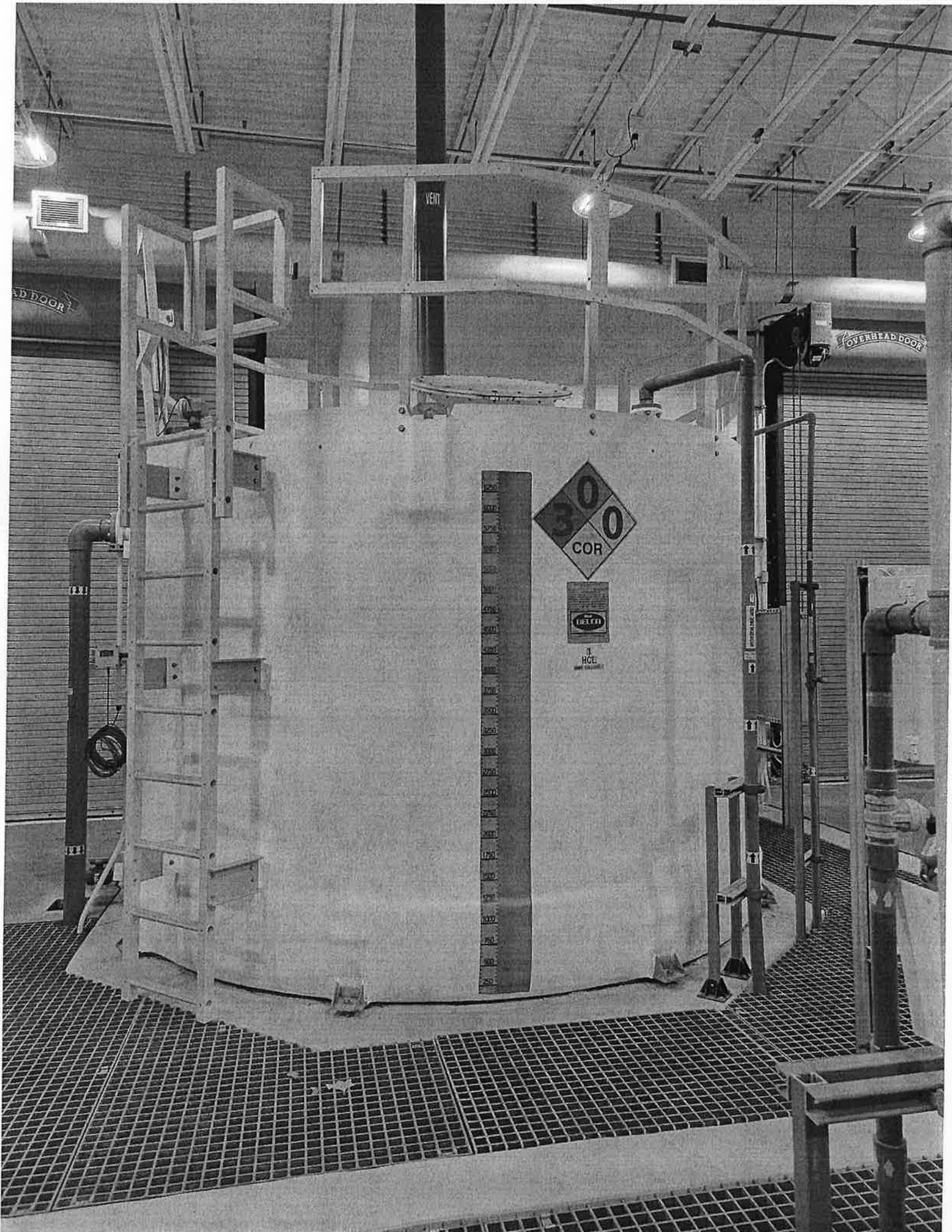
CHLORINE DIOXIDE
BATCH TANK
20
COR
1500 GALLONS

SIEMENS

CHLORINE DIOXIDE

CHLORINE DIOXIDE

CHLORINE DIOXIDE



VENT

AD DOOR

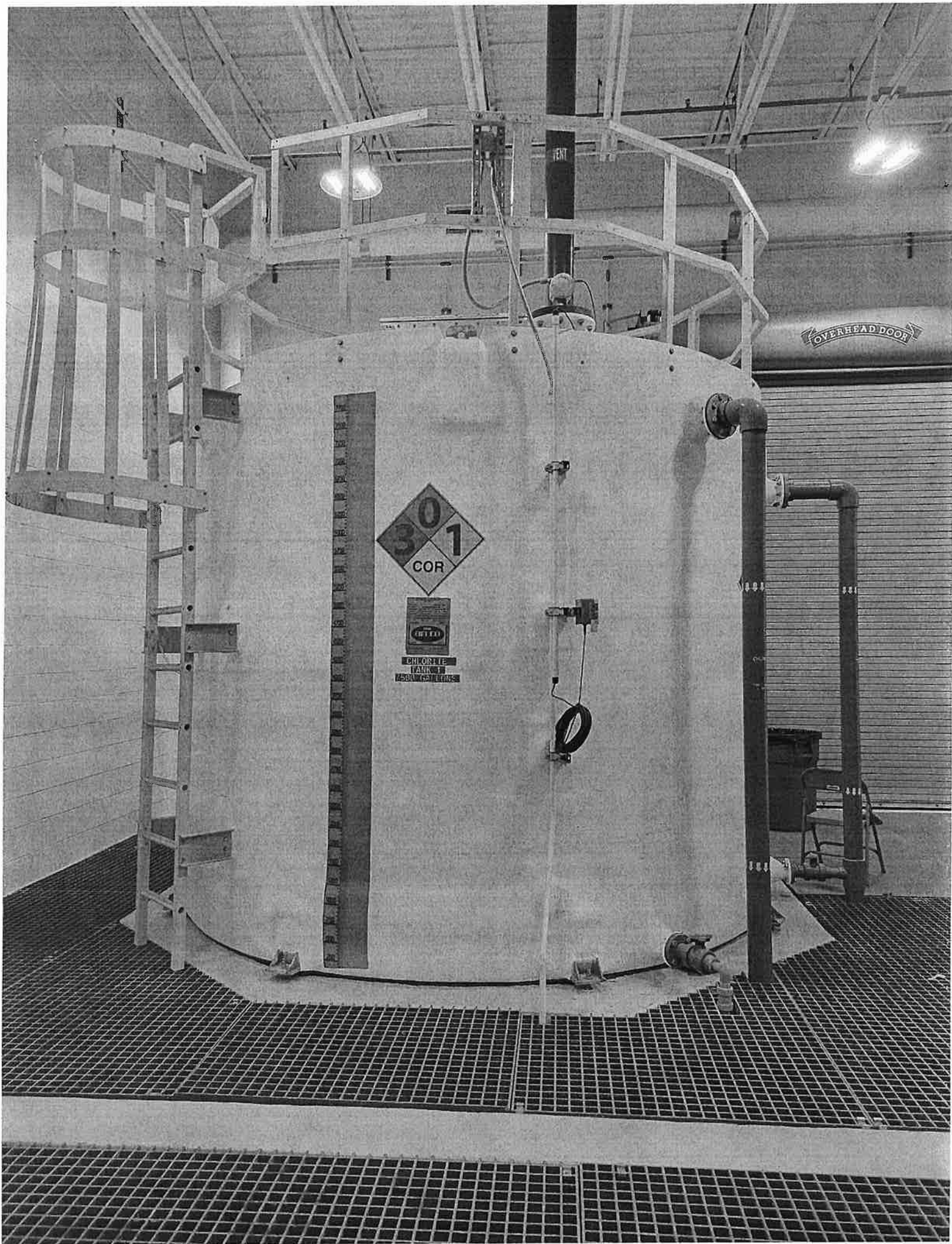
OVERHEAD DOOR

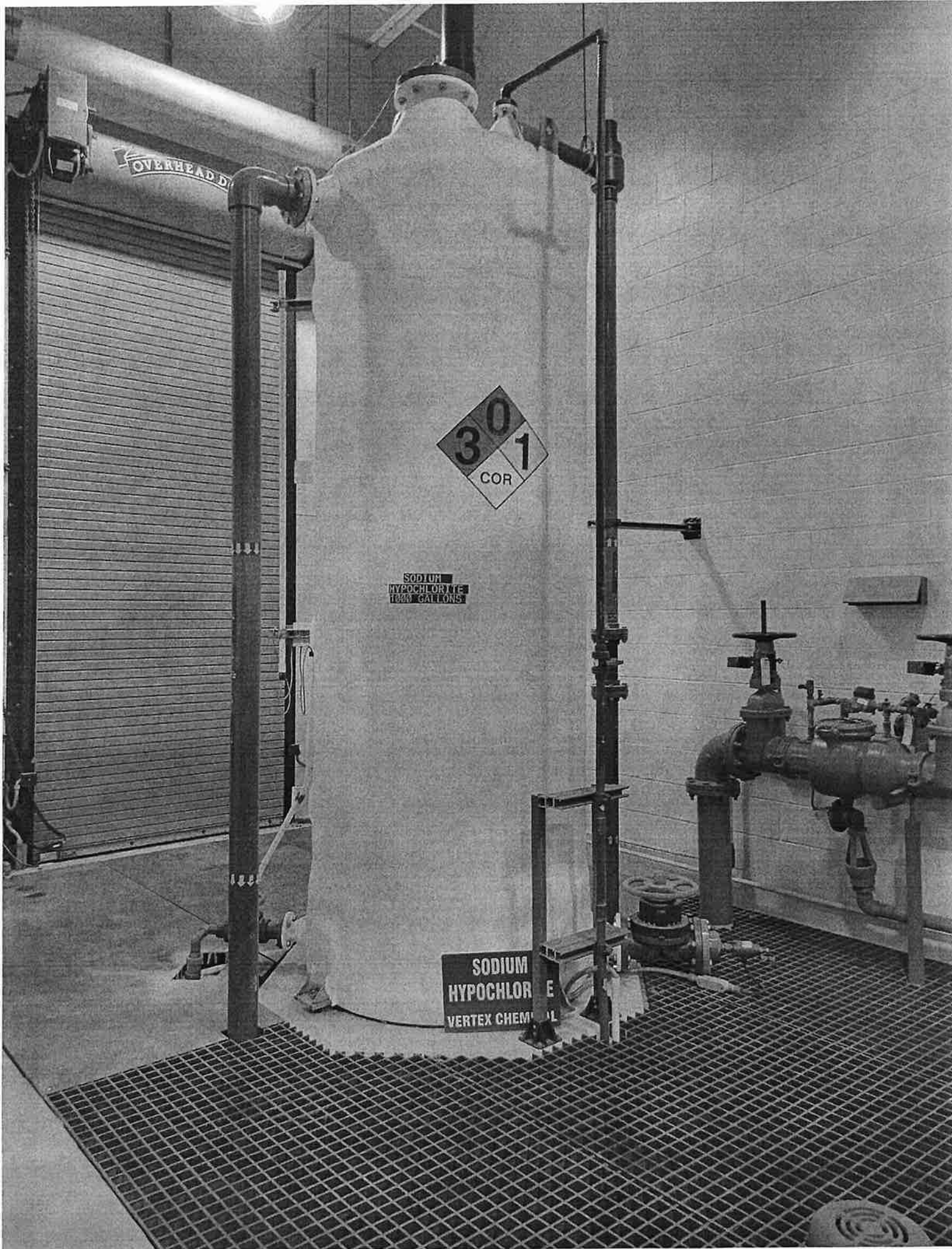
300
COR

DANGER

1
HCL

5200
5100
5000
4900
4800
4700
4600
4500
4400
4300
4200
4100
4000
3900
3800
3700
3600
3500
3400
3300
3200
3100
3000
2900
2800
2700
2600
2500
2400
2300
2200
2100
2000
1900
1800
1700
1600
1500
1400
1300
1200
1100
1000
900
800
700
600
500
400
300
200
100
0





OVERHEAD D...

3 0 1
COR

SODIUM
HYPOCHLORITE
1000 GALLONS

SODIUM
HYPOCHLORITE
VERTEX CHEMICAL