

MANUFACTURED BY BELCO MANUFACTURING COMPANY
Belton, Texas USA

DATE 4-15-13

SERIAL NO. 37501

CUSTOMER

VAN HORN CONSTRUCTION, INC.

DESIGN PRESS. 0.0/0.0 PSIG S.G. 1.17 DESIGN TEMP. 105° F

CONTENTS 12.5% SODIUM HYPOCHLORITE EMPTY WT. 3,000 LB.

NOM. CAPACITY 6,022 U.S. GALLONS FULL WT. 85,000 LB.

MAT'L C. B. 1C,2N 2M/HETRON 922 EPOXY VINYLESTER RESIN/BPO/DMA

MAT'L STRUCTURE HETRON 922 EPOXY VINYLESTER RESIN/BPO/DMA

DIA 10'-0" SSW 10'-3" ITEM # SHCLR-T-41

P.O.#13101.11210m

12095701



ASSEMBLY BY: FRANCISCO ORTIZ

Q.C. BY: STEVEN RODRIGUEZ

**SODIUM
HYPOCHLORITE**

MANUFACTURED BY BELCO MANUFACTURING COMPANY
Belton, Texas USA

DATE 4-22-13

SERIAL NO. 37503

CUSTOMER

VAN HORN CONSTRUCTION, INC.

DESIGN PRESS. 0.0/0.0 PSIG S.G. 1.10 DESIGN TEMP. 105° F

CONTENTS 15% HYDROCHLORIC ACID EMPTY WT. 3,270 LB.

NOM. CAPACITY 6,022 U.S. GALLONS FULL WT. 66,000 LB.

MAT'L C. B. 2C, 4M/HETRON 922 EPOXY VINYLESTER RESIN/MEKP

MAT'L STRUCTURE HETRON 922 EPOXY VINYLESTER RESIN/MEKP

DIA. 10'-0"

SSW 10'-9"

ITEM #

HCL-T-41

P.O.#13101,11210m

12095703

37503

BELCO

254-333-9060

Manufacturing Co.

BELTON, TX

ASSEMBLY BY: FRANCISCO ORTIZ

Q.C. BY: STEVEN RODRIGUEZ

MANUFACTURING INFORMATION:

CUSTOMER: SIEMENS

RFQ: 6083

SALES ORDER: 0006189

DWG #: B-37826

SERIAL #: 15041

MFG DATE: 4/25/2013

TANK INFORMATION:

CAPACITY, GALLONS: 1500

TEMPERATURE, °F.: 100

PRESSURE/VACUUM: ATMOSPHERIC

SPECIFIC GRAVITY: 1.3

CONTENTS: CHLORINE DIOXIDE SOLUTION

TANK CONSTRUCTION:

LINER: VINYL ESTER

VEIL: NEXUS

STRUCTURE: VINYL ESTER

DESIGN: CENTRIFUGALLY CAST

CAUTION: PRESSURE/VACUUM MUST NOT EXCEED RATING LISTED ABOVE.
VENT NOT DESIGNED FOR COMPRESSED AIR UNLOADING.

NOTES:

CONTENTS: IF DIFFERENT THAN LISTED ABOVE, CONSULT DESIGN TANKS TO ASSURE COMPATIBILITY. FOUNDATION PAD MUST BE UNIFORMLY SMOOTH WITH A SURFACE PLANE TOLERANCE OF 1/8" MAX. OVER 10'. HANDLING: TO ASSURE PROPER HANDLING, REFER TO SITE HANDLING / O AND M INSTRUCTIONS INCLUDED WITH TANK.

P.O. 4500421044

FBAT 60" DIA. X 147" HT.

T-31



612 W. BLACKHAWK STR. SIOUX FALLS, SD 57104 (605) 965-1600

CAUTION
THIS TANK IS NOT DESIGNED
FOR PRESSURE OR VACUUM.
TANK MUST BE ADEQUATELY
VENTED TO ATMOSPHERE.

MANUFACTURING INFORMATION:

CUSTOMER: SIEMENS

RFQ: 6083

SALES ORDER: 0006189

DWG #: B-37827

SERIAL #: 15042

MFG DATE: 4/25/2013

TANK INFORMATION:

CAPACITY, GALLONS: 500

TEMPERATURE, °F.: 100

PRESSURE/VACUUM: ATMOSPHERIC

SPECIFIC GRAVITY: 1.3

CONTENTS: CHLORINE DIOXIDE SOLUTION

TANK CONSTRUCTION:

LINER: VINYL ESTER

VEIL: NEXUS

STRUCTURE: VINYL ESTER

DESIGN: CENTRIFUGALLY CAST

CAUTION: PRESSURE/VACUUM MUST NOT EXCEED RATING LISTED ABOVE.

VENT NOT DESIGNED FOR COMPRESSED AIR UNLOADING.

NOTES:

CONTENTS: IF DIFFERENT THAN LISTED ABOVE, CONSULT DESIGN TANKS TO ASSURE COMPATABILITY. FOUNDATION: PAD MUST BE UNIFORMLY SMOOTH WITH A SURFACE PLANE TOLERANCE OF 1/8" MAX. OVER 10'. HANDLING: TO ASSURE PROPER HANDLING, REFER TO SITE HANDLING / O AND M INSTRUCTIONS INCLUDED WITH TANK.

P.O. 4500421044

FBAT 42" DIA. X 104" HT.

T-41

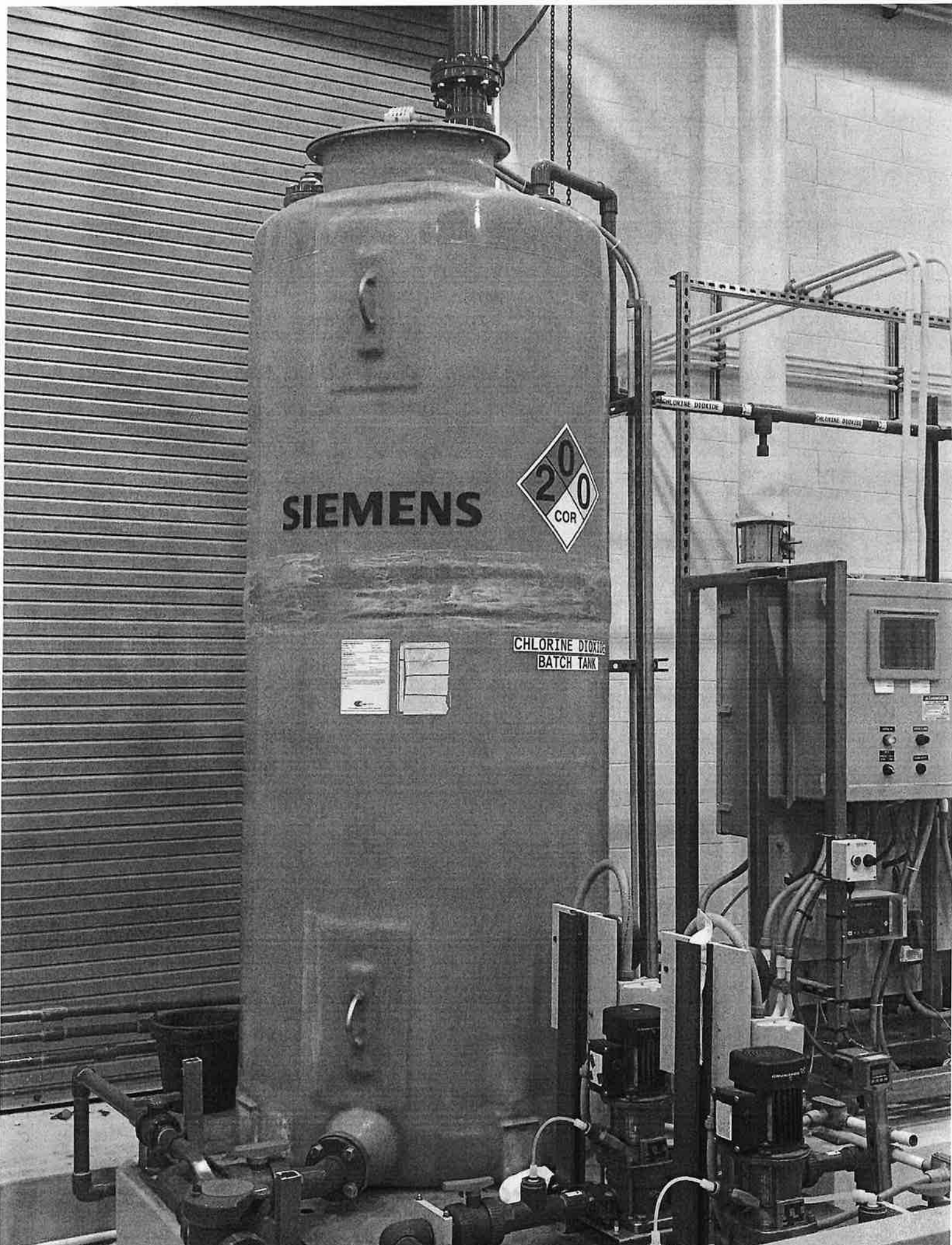


612 W. BLACKHAWK STR. SIOUX FALLS, SD 57104 (605) 965-1600

SIEMENS



CHLORINE DIOXIDE
BATCH TANK



MANUFACTURED BY BELCO MANUFACTURING COMPANY
Belton, Texas USA

DATE 4-17-13

SERIAL NO. 37502

CUSTOMER

VAN HORN CONSTRUCTION, INC.

DESIGN PRESS. 0.0-0.0 PSIG S.G. 1.30 DESIGN TEMP 105° F

CONTENTS 25% SODIUM CHLORITE EMPTY WT. 3,150 LB.

NOM. CAPACITY 6.312 U.S. GALLONS FILL WT. 10,000 LB.

MAT'L G. # HENN 2MMETRON 922 EPOXY VINYLESTER RESIN/BPO/DMA

MAT'L STRUCTURE HENN 2MMETRON 922 EPOXY VINYLESTER RESIN/BPO/DMA

DIA 18'-0" SSW 11'-7" ITEM # SCHL. F-4

P.O.# 13101 11210m

12085702



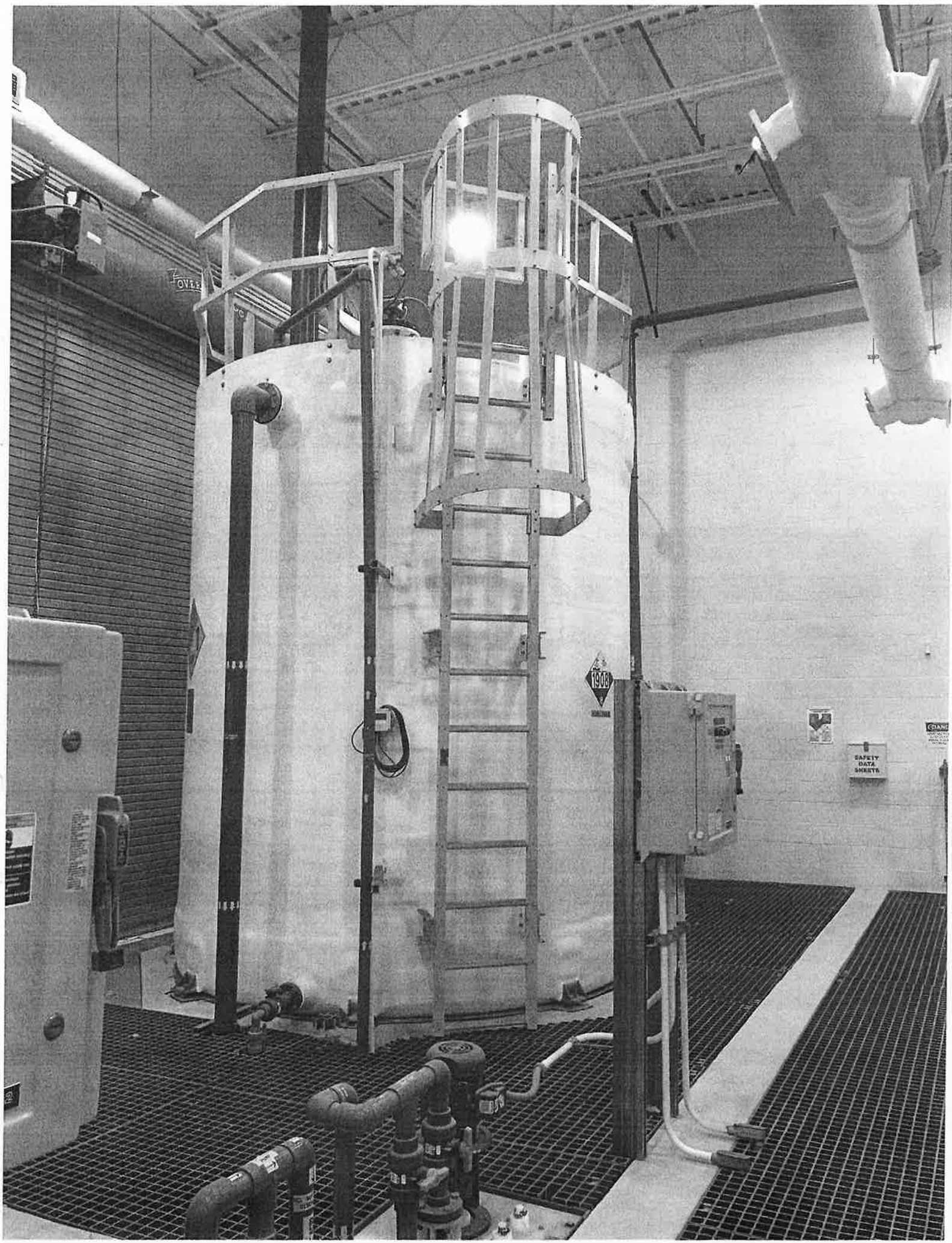
254-933-1000

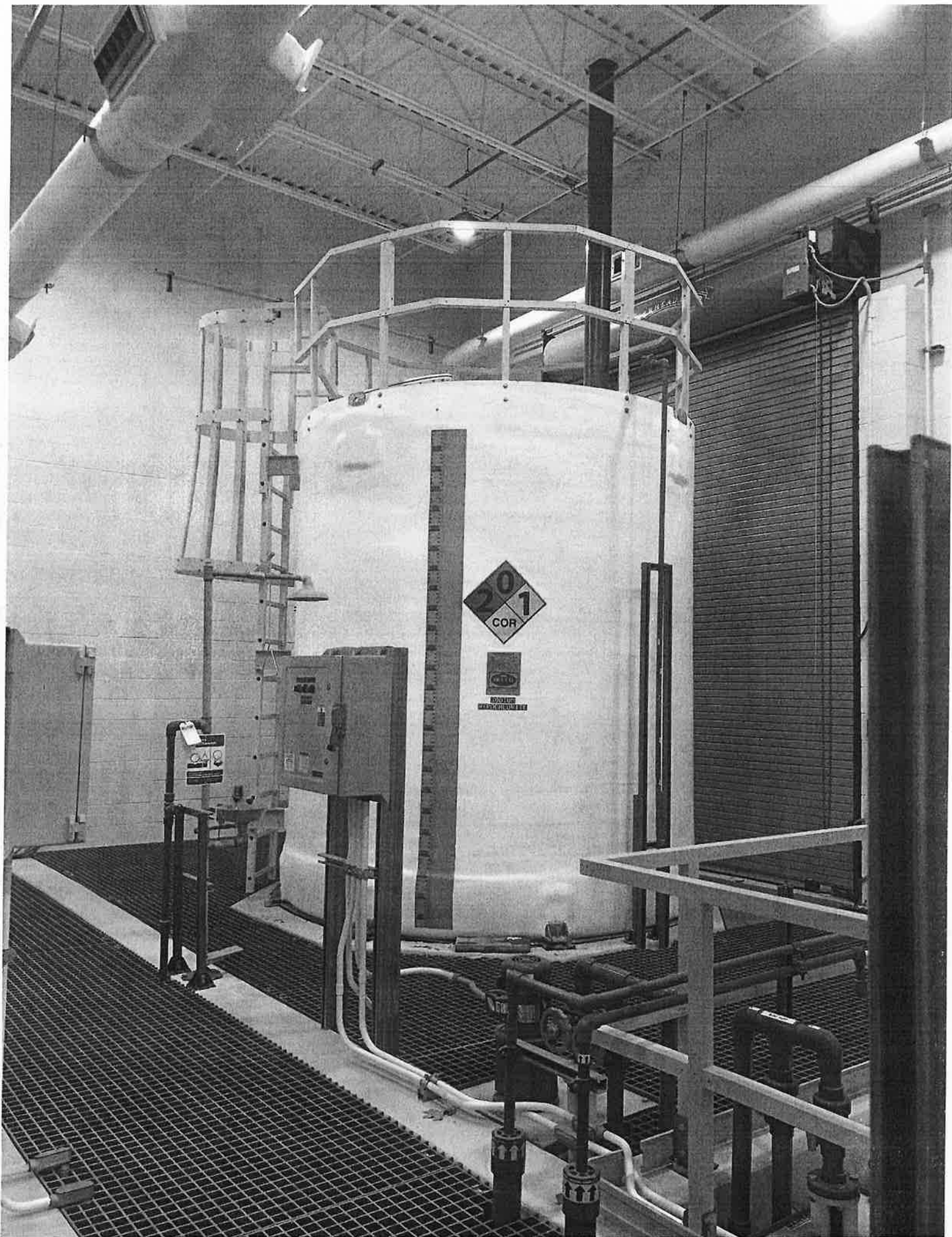
Manufacturing Co.

BELTON, TX

ASSEMBLED BY FRANCISCO ORTIZ

QC BY STEVEN RODRIGUEZ





MANUFACTURED BY BELCO MANUFACTURING COMPANY
Belton, Texas USA

DATE 4-15-13 SERIAL NO. 37501
CUSTOMER VAN HORN CONSTRUCTION, INC.
DESIGN PRESS. 0.0/0.0 PSIG S.G. 1.17 DESIGN TEMP. 105° F
CONTENTS 12.5% SODIUM HYPOCHLORITE EMPTY WT. 3,000 LB.
NOM. CAPACITY 6,022 U.S. GALLONS FULL WT. 65,000 LB.
MAT'L C. B. 1C, 2N 2M HETRON 922 EPOXY VINYLESTER RESIN/BPO/DMA
MAT'L STRUCTURE HETRON 922 EPOXY VINYLESTER RESIN/BPO/DMA
DIA. 10'-0" SSW 10'-6" ITEM # SHCLR-7-11
P.O.#13101.11210m 1208701



ASSEMBLY BY: FRANCISCO ORTIZ

Q.C. BY: STEVEN RODRIGUEZ

**SODIUM
HYPOCHLORITE**